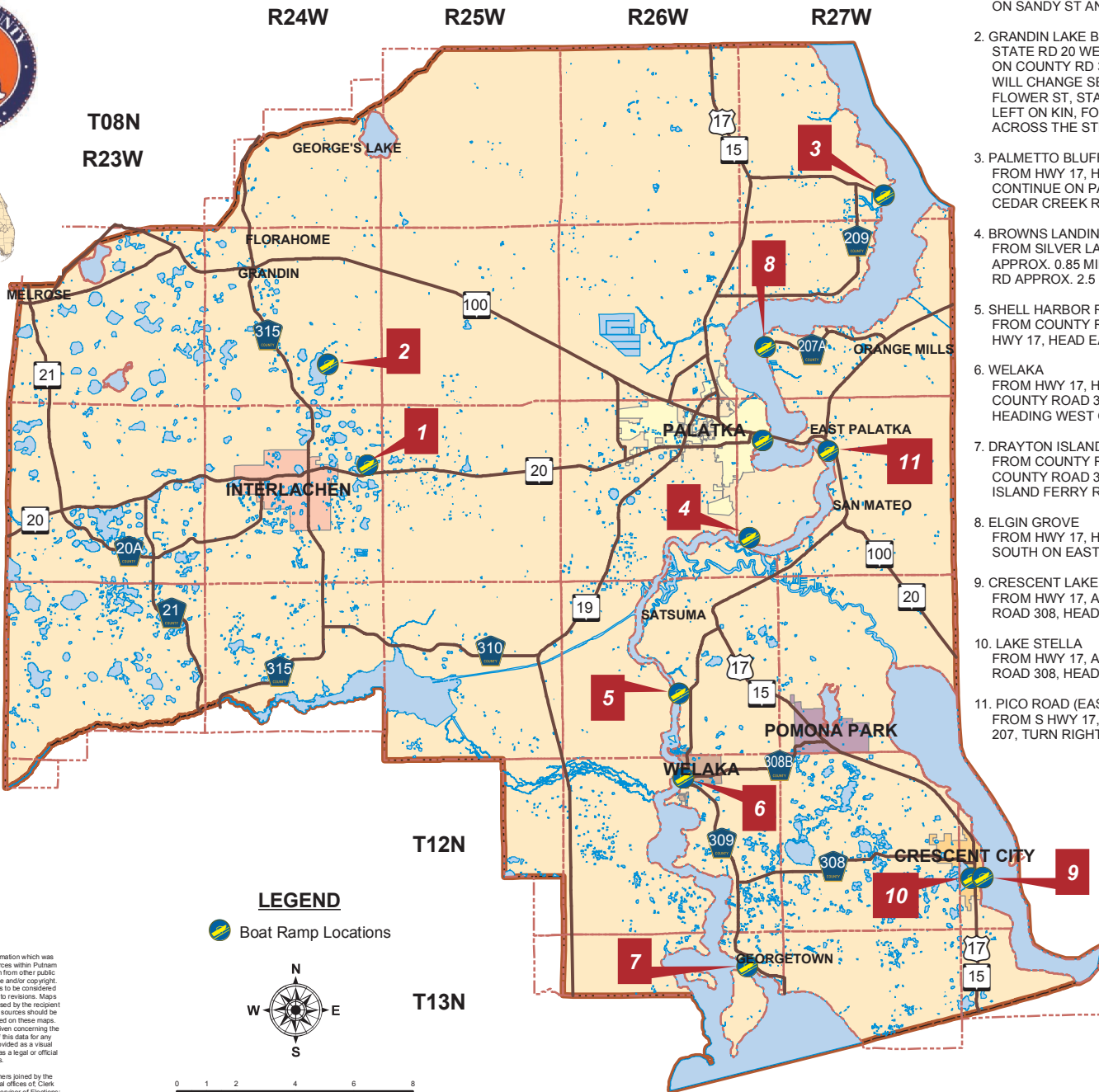


# PUTNAM COUNTY BOAT RAMP LOCATIONS



1. LAKE IDA BOAT RAMP  
FROM STATE RD 20 TURN NORTH ON SUN AV, TURN LEFT ON SANDY ST AND RIGHT ONTO IDA BLVD.
2. GRANDIN LAKE BOAT RAMP  
STATE RD 20 WEST TOWARD INTERLACHEN, TURN RIGHT ON COUNTY RD 315, RIGHT ON MAIN ST (THE ROAD NAME WILL CHANGE SEVERAL TIMES UNTIL YOU GET ONTO FLOWER ST, STAY ON FLOWER ST), LEFT ON DAWN AV, LEFT ON KIN, FOLLOW KIN TO THE END, BOAT RAMP IS ACROSS THE STREET.
3. PALMETTO BLUFF ROAD  
FROM HWY 17, HEAD EAST ON COUNTY ROAD 209, CONTINUE ON PALMETTO BLUFF RD, HEAD NORTH ON CEDAR CREEK RD, HEAD WEST ON BOAT RAMP RD.
4. BROWNS LANDING  
FROM SILVER LAKE DR HEAD EAST ON EDGEMOOR ST APPROX. 0.85 MILES, HEAD SOUTH ON BROWNS LANDING RD APPROX. 2.5 MILES.
5. SHELL HARBOR ROAD  
FROM COUNTY ROAD 309, APPROX. 2.5 MILES SOUTH OF HWY 17, HEAD EAST ON SHELL HARBOR ROAD.
6. WELAKA  
FROM HWY 17, HEAD EAST ON COUNTY ROAD 308B, WHERE COUNTY ROAD 308B AND 309 INTERSECT, CONTINUE HEADING WEST ON ELM STREET.
7. DRAYTON ISLAND FERRY  
FROM COUNTY ROAD 309, APPROX. 3 MILES SOUTH OF COUNTY ROAD 308B, HEAD SOUTH WEST ON DRAYTON ISLAND FERRY RD.
8. ELGIN GROVE  
FROM HWY 17, HEAD WEST ON COUNTY ROAD 207A, HEAD SOUTH ON EAST RIVER RD, HEAD WEST ON MAGNOLIA AVE.
9. CRESCENT LAKE  
FROM HWY 17, APPROX. 0.5 MILES SOUTH OF COUNTY ROAD 308, HEAD EAST ON CENTRAL AVE.
10. LAKE STELLA  
FROM HWY 17, APPROX. 0.5 MILES SOUTH OF COUNTY ROAD 308, HEAD WEST ON CENTRAL AVE.
11. PICO ROAD (EAST PALATKA)  
FROM S HWY 17, APPROX. 0.5 MILES SOUTH OF STATE ROAD 207, TURN RIGHT ONTO PICO RD.

## LEGEND

Boat Ramp Locations



This map was created using digital database information which was developed from one or more local government sources within Putnam County, FL, and may include additional information from other public and private sources which may be subject to license and/or copyright. All provided Geographic Information System data is to be considered a generalized spatial representation that is subject to revisions. Maps and associated information must be accepted and used by the recipient with the understanding that the primary information sources should be consulted for verification of the information contained on these maps. As such, no warranties, expressed or implied, are given concerning the accuracy, completeness, reliability or suitability of this data for any particular use. Furthermore, this information is provided as a visual representation only and is not intended to be used as a legal or official representation of legal boundaries.

The Putnam County Board of County Commissioners joined by the county departments, together with the constitutional offices of Clerk of the Circuit Court, Property Appraiser, Sheriff, Supervisor of Elections, and Tax Collector, assumes no liability whatsoever associated with the use or misuse of this data.

Putnam County IT/GIS Department Copyright (c) 2004  
Prepared by: KPhaxton, Updated 13 Sept 2006  
N:\Projects\GIS\ParkeRec\BoatRamps.mxd

