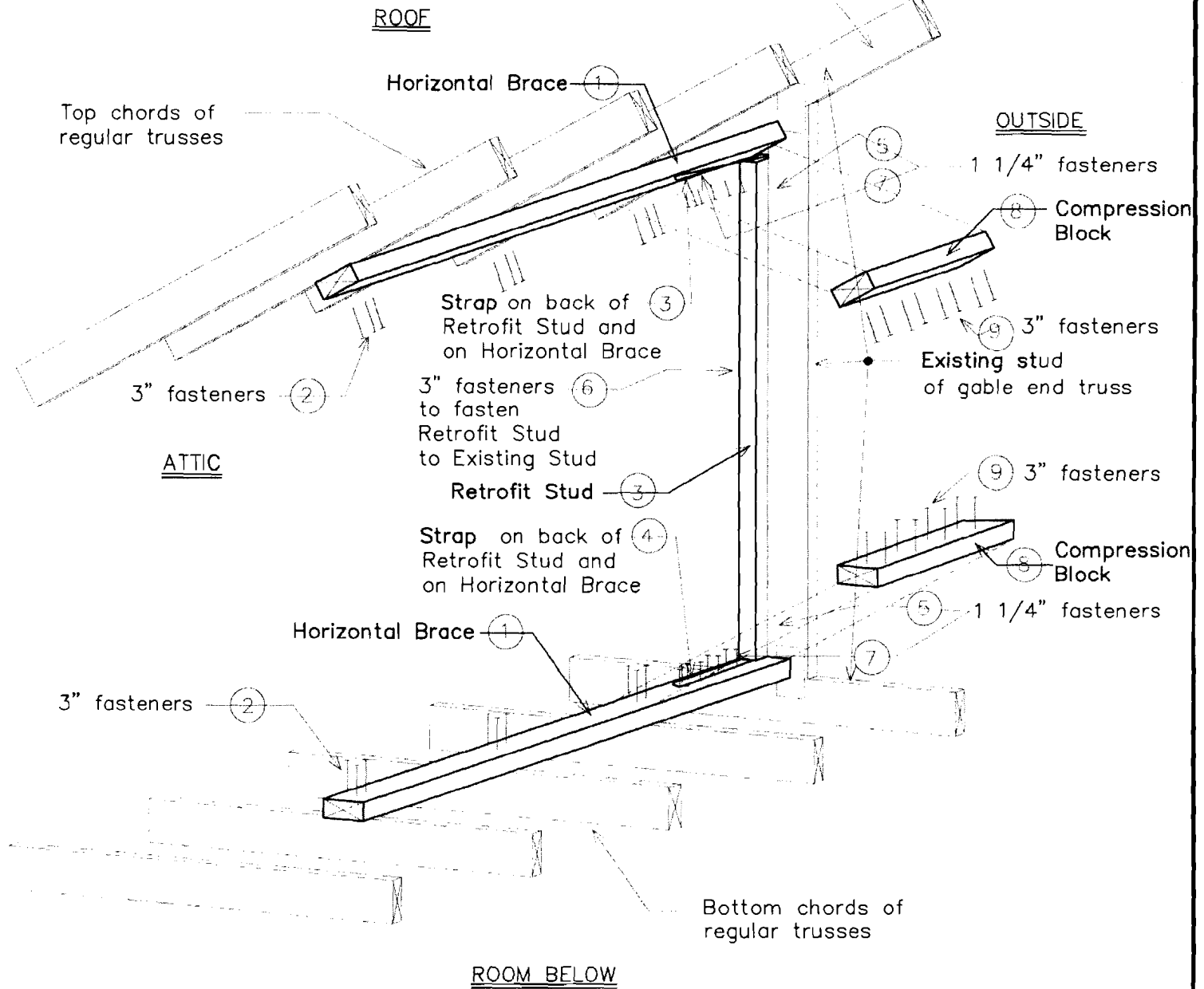


The top chord of the gable end truss may be 3 1/2" or more lower than the other that of regular trusses to accommodate outlookers.



The gable end shown is a truss gable end. Similar retrofit measures apply to conventionally framed gable ends.

Regular trusses may have diagonal members that connect the bottom and top chords.

Fasteners shown illustrate locations and not the number of fasteners.

**FIGURE A104.1**  
**RETROFIT DETAILS FOR TRUSS GABLE ENDS**

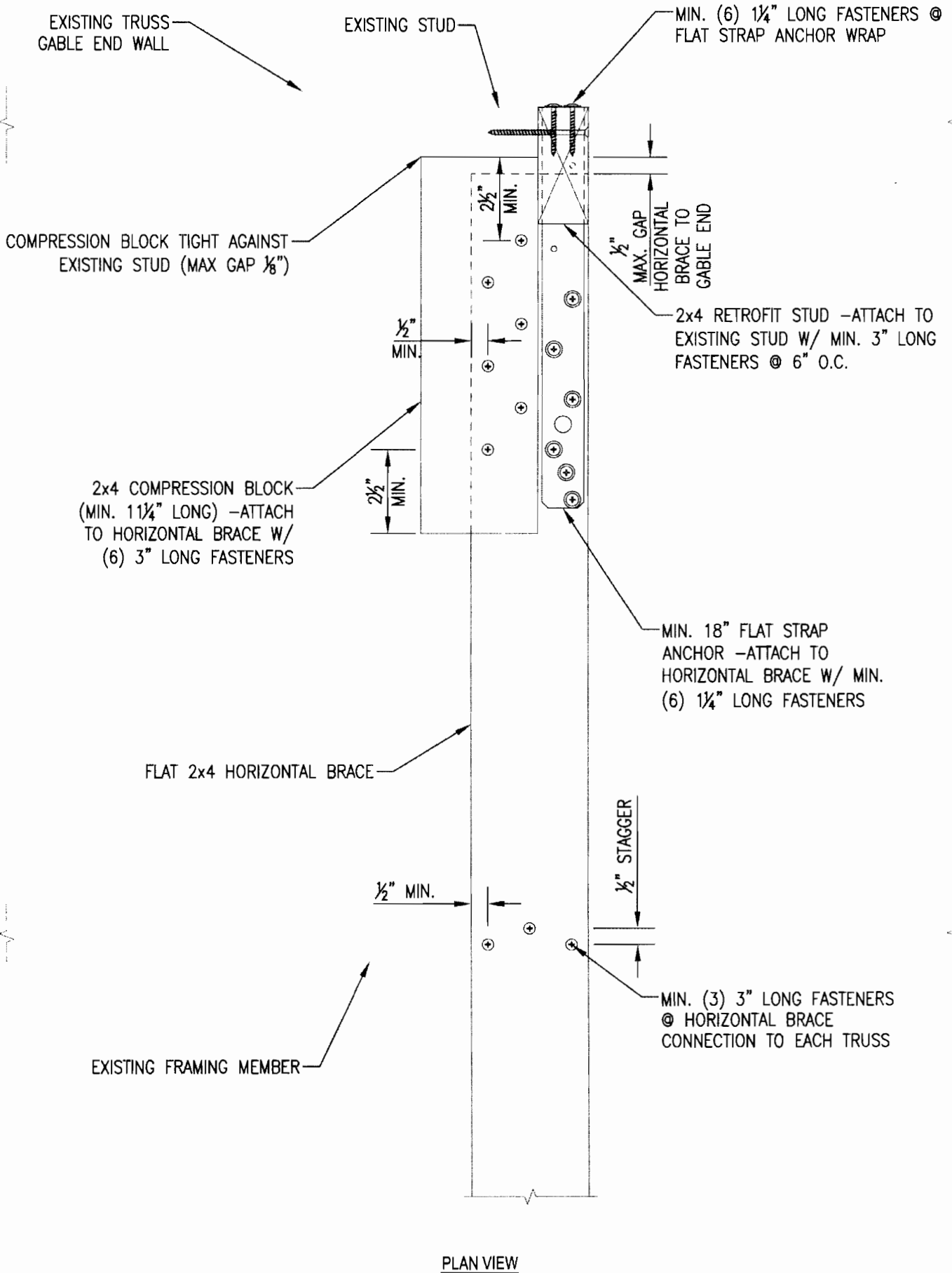


FIGURE A104.2.2 DETAILS OF STRAP & COMPRESSION BLOCK INSTALLATION - 2x4 RETROFIT STUD





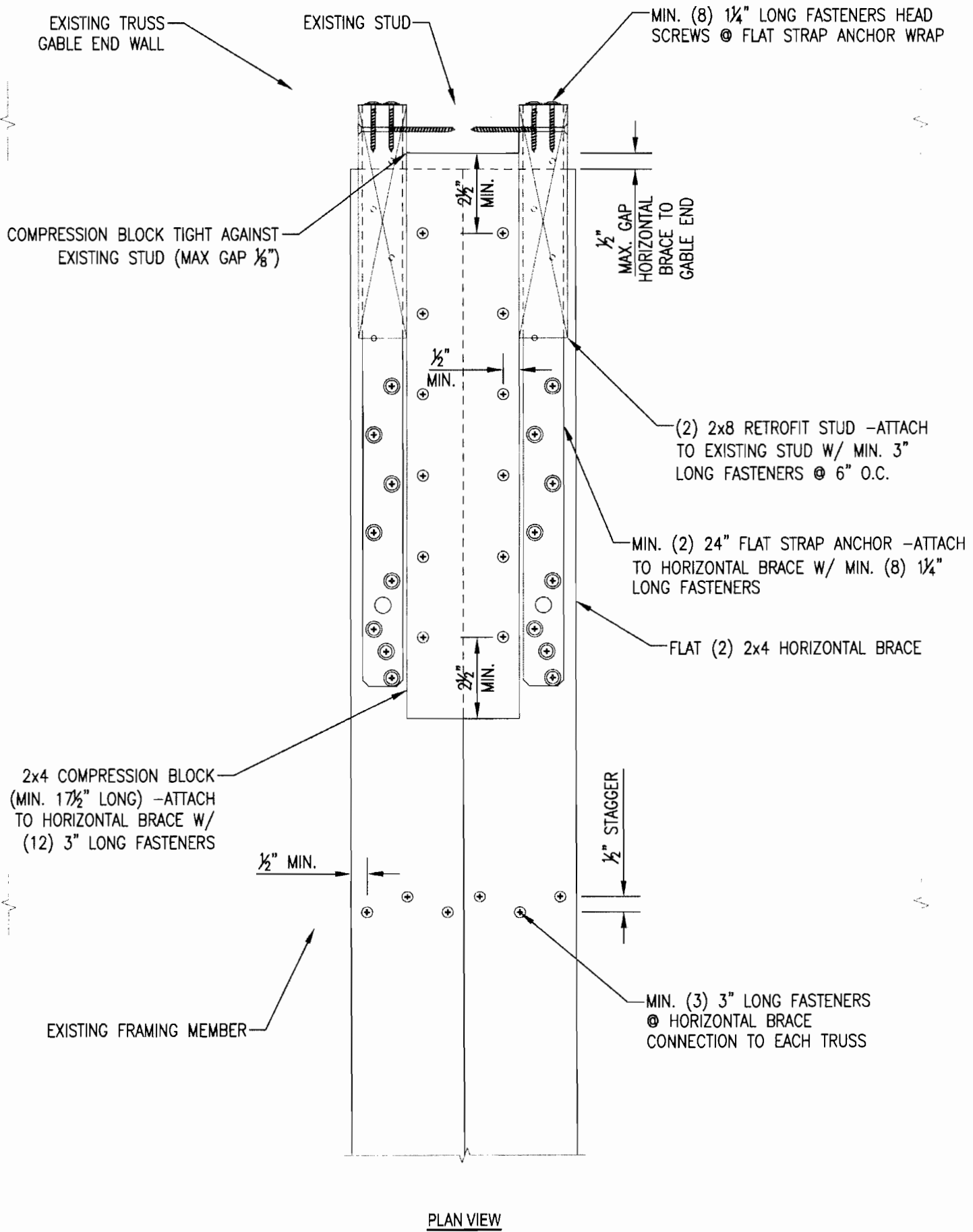
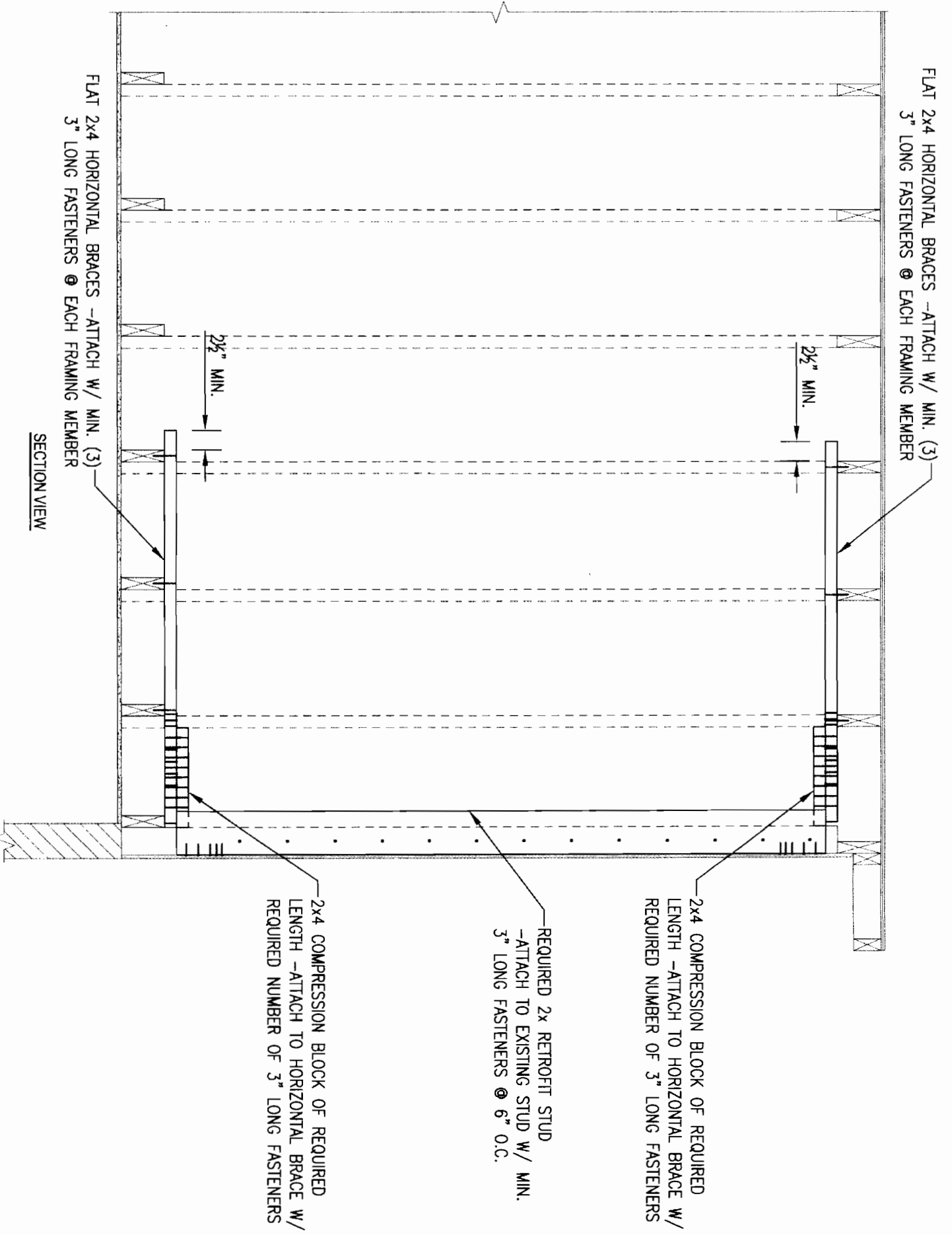


FIGURE A104.2.5 DETAILS OF STRAP & COMPRESSION BLOCK INSTALLATION - (2)2x8 RETROFIT STUD



FLAT 2x4 HORIZONTAL BRACES -ATTACH W/ MIN. (3)  
3" LONG FASTENERS @ EACH FRAMING MEMBER

2 1/2" MIN.

2 1/2" MIN.

FLAT 2x4 HORIZONTAL BRACES -ATTACH W/ MIN. (3)  
3" LONG FASTENERS @ EACH FRAMING MEMBER

SECTION VIEW

2x4 COMPRESSION BLOCK OF REQUIRED  
LENGTH -ATTACH TO HORIZONTAL BRACE W/  
REQUIRED NUMBER OF 3" LONG FASTENERS

REQUIRED 2x RETROFIT STUD  
-ATTACH TO EXISTING STUD W/ MIN.  
3" LONG FASTENERS @ 6" O.C.

2x4 COMPRESSION BLOCK OF REQUIRED  
LENGTH -ATTACH TO HORIZONTAL BRACE W/  
REQUIRED NUMBER OF 3" LONG FASTENERS

FIGURE A104.2.6 SECTION VIEW OF GABLE END RETROFIT (CONVENTIONAL FRAMED)





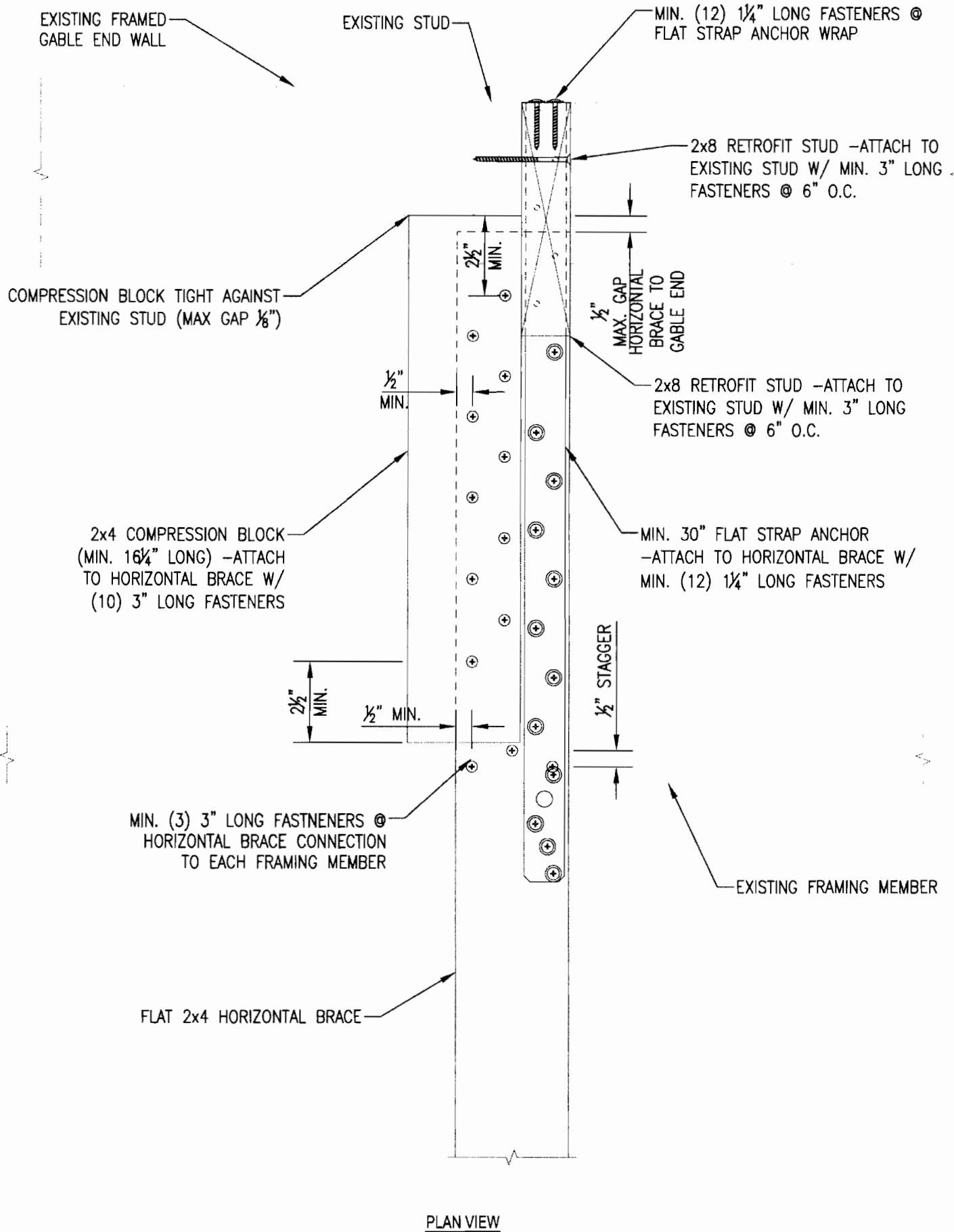


FIGURE A104.2.9 DETAILS OF STRAP & COMPRESSION BLOCK INSTALLATION - 2x8 RETROFIT STUD

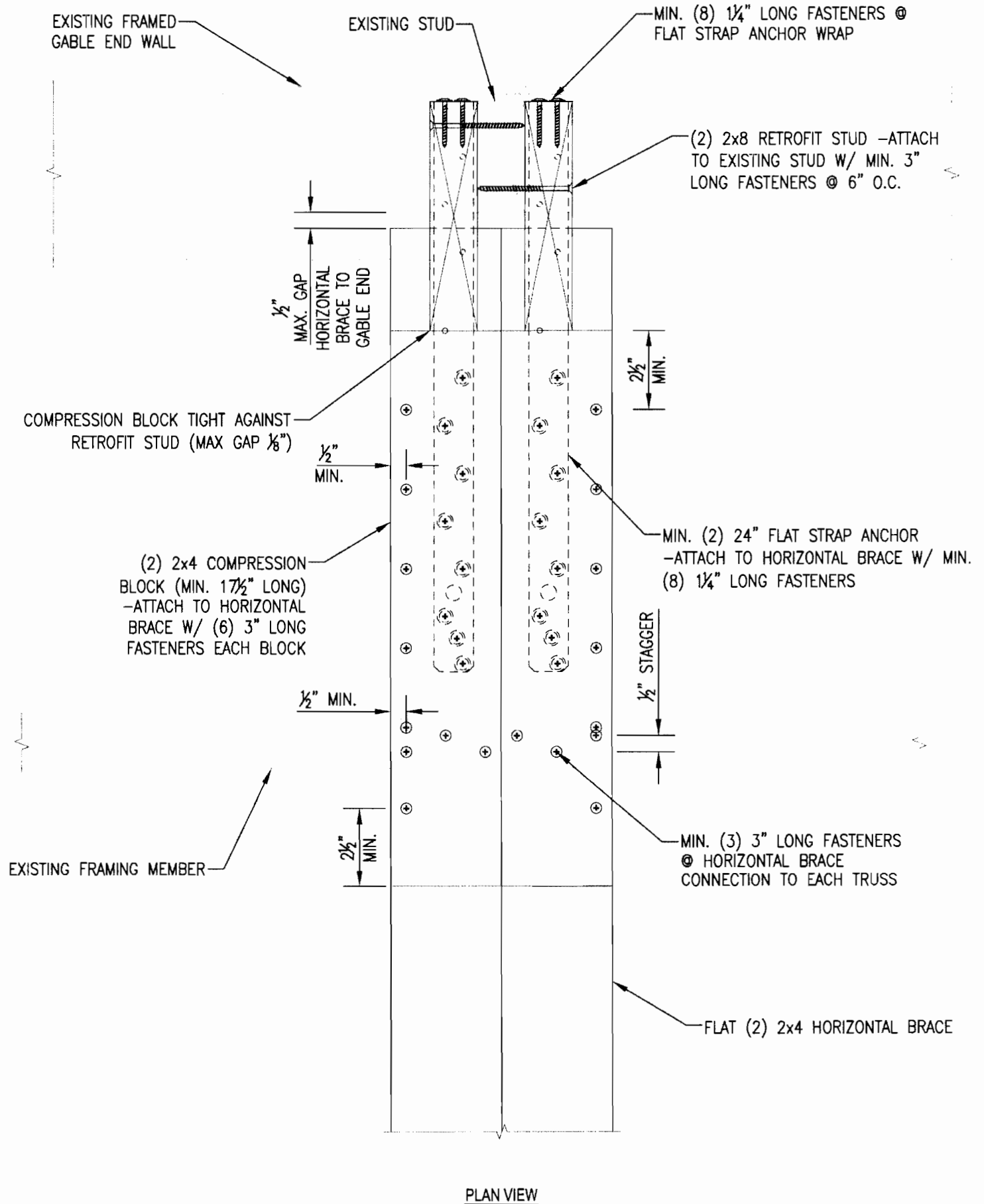


FIGURE A104.2.10 DETAILS OF STRAP & COMPRESSION BLOCK INSTALLATION - (2)2x8 RETROFIT STUD

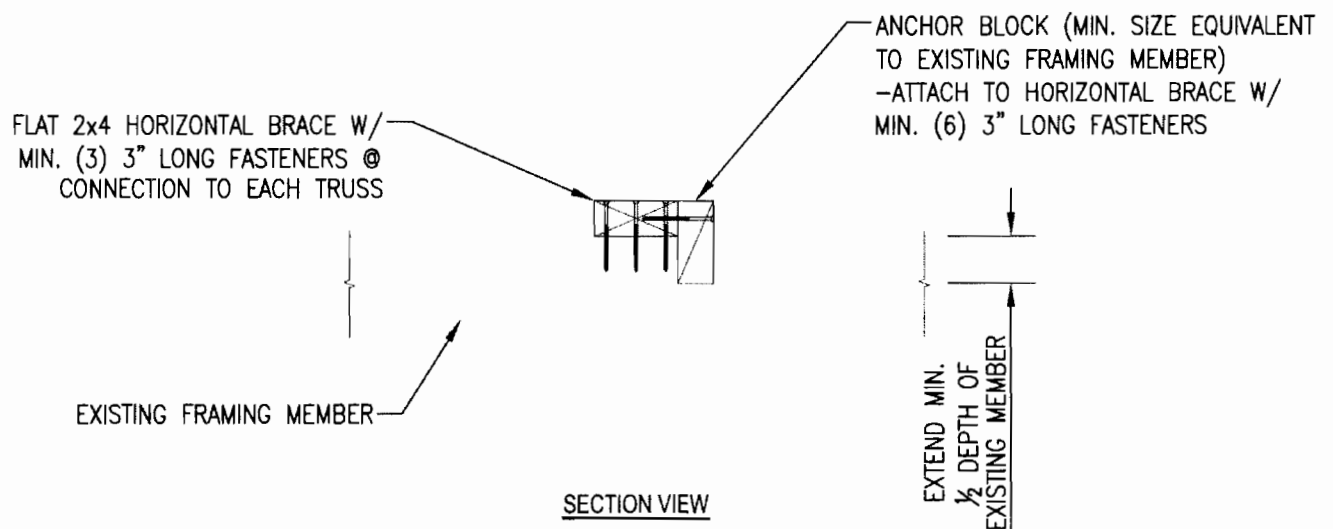
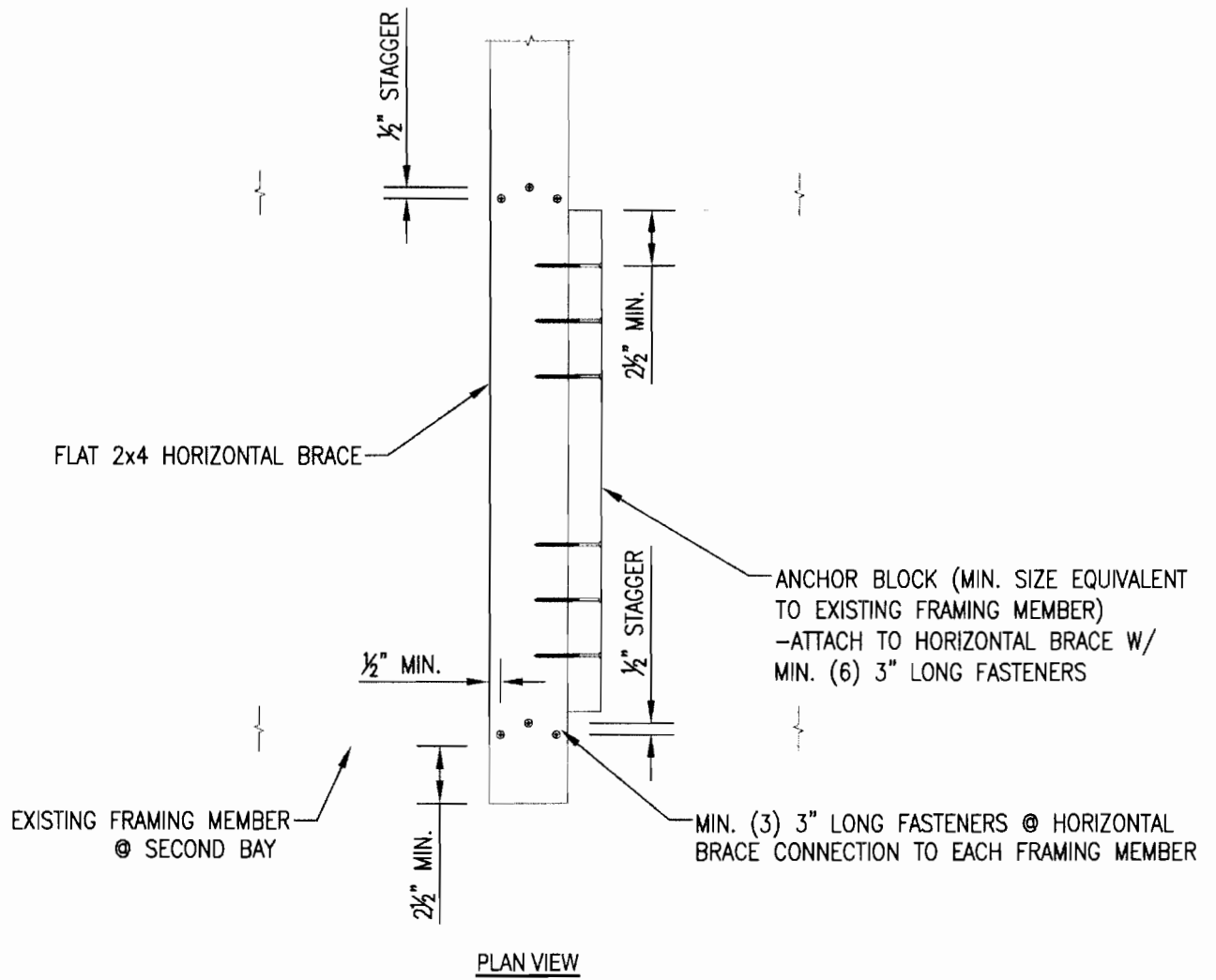


FIGURE A104.2.11 DETAIL OF ANCHOR BLOCK INSTALLATION

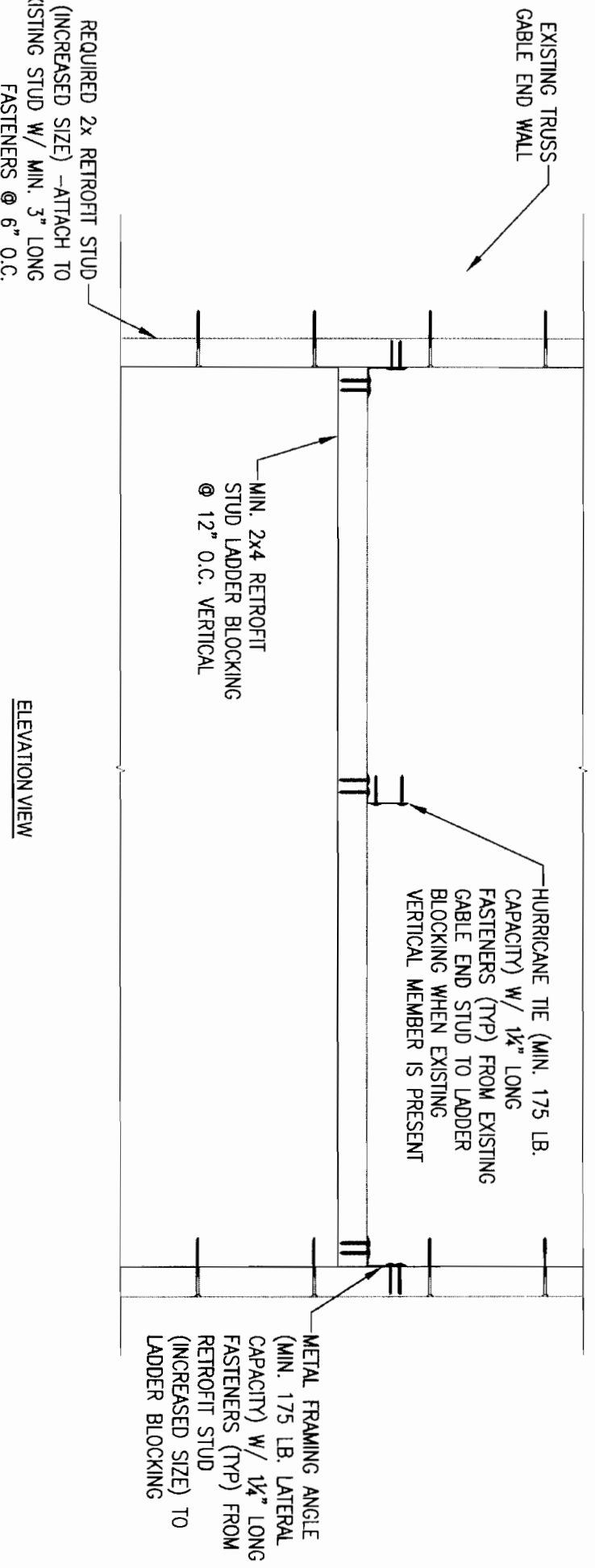
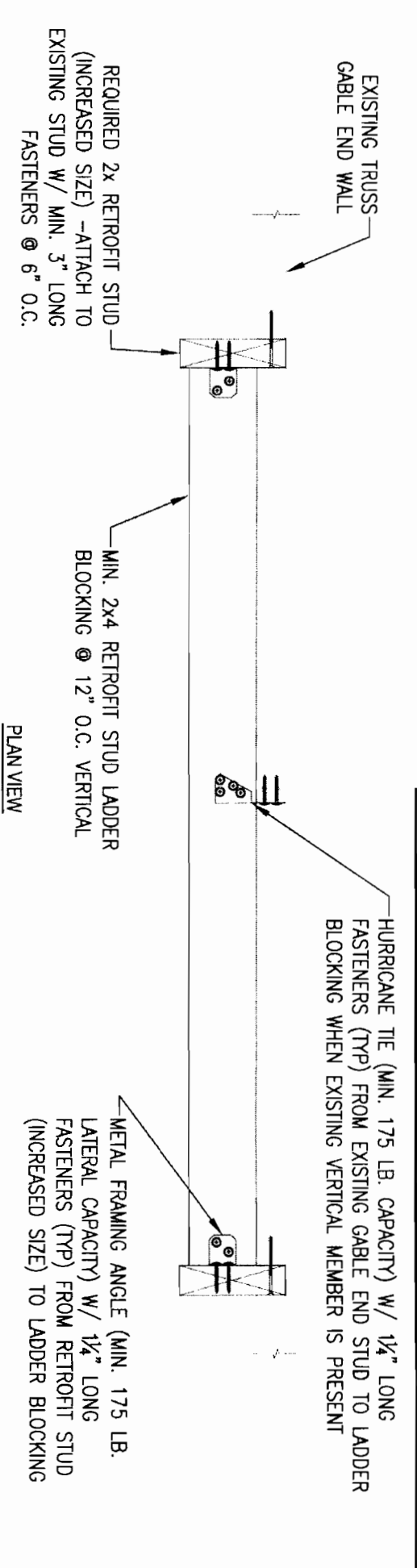


FIGURE A104.5.1.1 DETAIL OF LADDER BRACING FOR OMITTED RETROFIT STUD (TRUSS GABLE END)

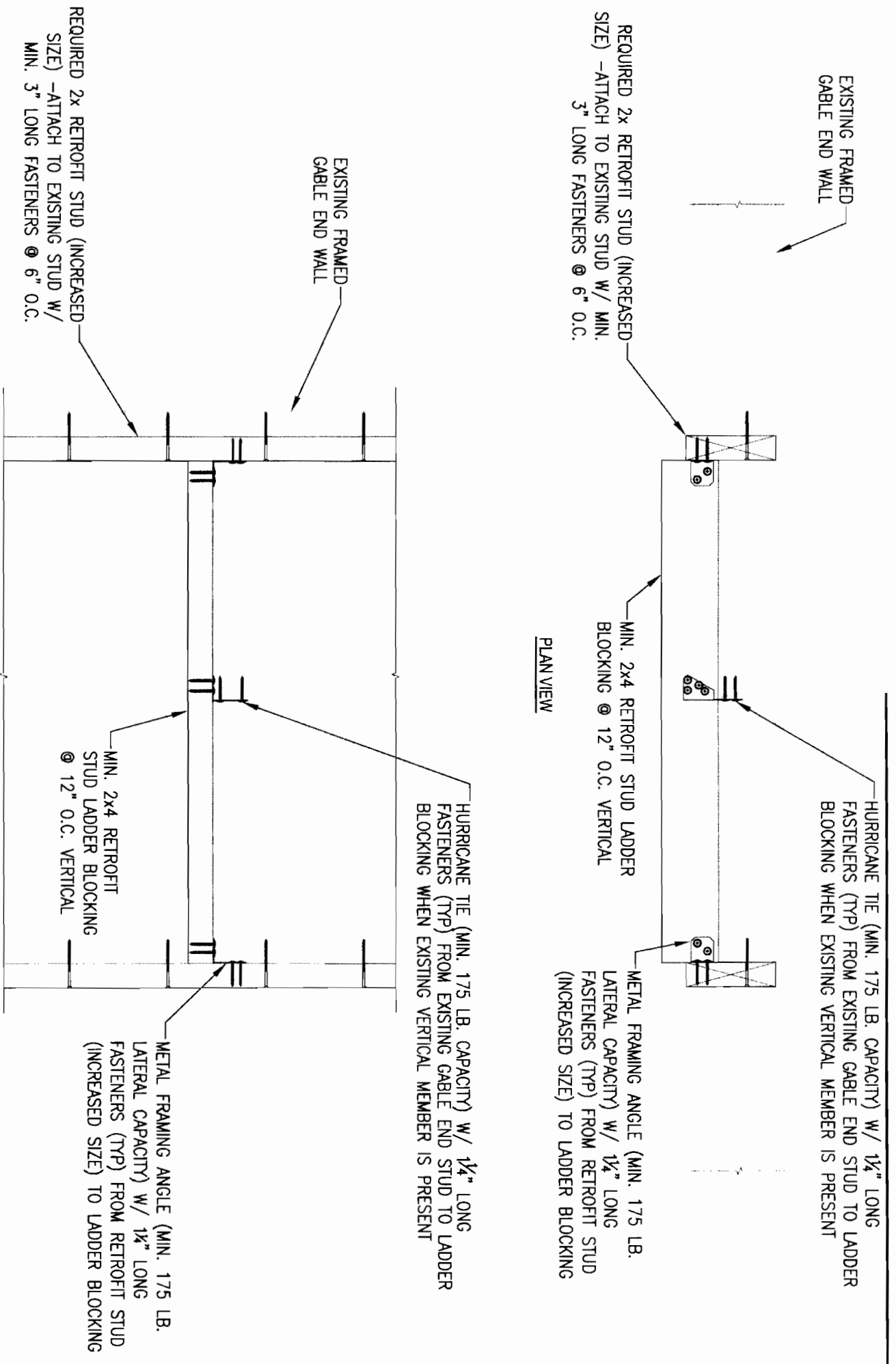


FIGURE A104.5.1.2 DETAIL OF LADDER BRACING FOR OMITTED RETROFIT STUD (CONVENTIONAL FRAMING)

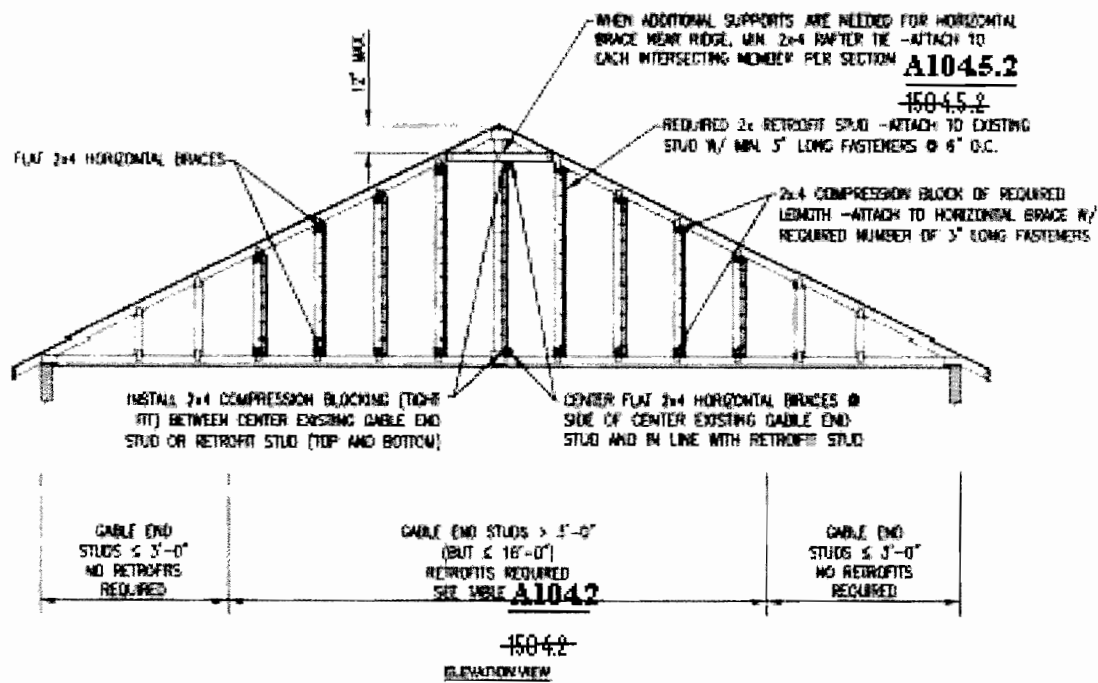


FIGURE A1045.2 DETAIL OF RETROFIT RIDGE TIE INSTALLATION

**Table 1504.6**  
**Table A104.6 Spacing of Right Angle Gusset Brackets**

Exposure Category	Maximum 3-Sec. Gust Wind Speed - V mph	Spacing of Right Angle Gusset Brackets <sup>a</sup>
C	110	38-inches
C	120	32-inches
C	130	28-inches
C	140	24-inches
C	150	20-inches
B	110	48-inches
B	120	40-inches
B	130	36-inches
B	140	30-inches
B	150	26-inches

**Section 1504.2**

a. See Section A104.2 for definition of right angle gusset bracket.